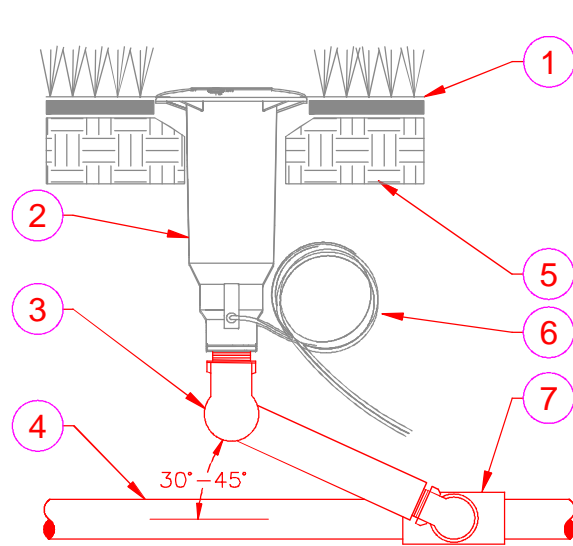


**LASCO®**  
Fittings, Inc.



- 1 FINISHED GRADE.
- 2 MIPT INLET SPRINKLER HEAD, V.I.H., SEE LEGEND FOR PART NUMBER.
- 3 LASCO SWING JOINT – PUT A X IN THE BOX TO DETERMINE SIZE AND INLET/OUTLET ENDS WANTED.
- 4 LATERAL PVC PIPE.
- 5 APPROVED BACKFILL.
- 6 ELECTRICAL WIRING 24V, WITH 36" SERVICE/EXPANSION COIL.
- 7 LASCO ACME THREADED SERVICE FITTING.

ACME INLET x MIPT OUTLET SWING JOINTS—STANDARD HORIZONTAL OR SIDE MOUNT

- 1" Swing Joint 1½" ACME Inlet x 1" MIPT Outlet, Part #G1M2-212
- 1¼" Swing Joint 1½" ACME Inlet x 1" MIPT Outlet, Part #G2M7-212
- 1¼" Swing Joint 1½" ACME Inlet x 1¼" MIPT Outlet, Part #G2M2-212
- 1½" Swing Joint 1½" ACME Inlet x 1" MIPT Outlet, Part #G3M7-212
- 1½" Swing Joint 1½" ACME Inlet x 1¼" MIPT Outlet, Part #G3M4-212
- 1½" Swing Joint 1½" ACME Inlet x 1½" MIPT Outlet, Part #G3M2-212

NOTE : ALL ACME INLETS ARE 1½" ACME FOR SWING JOINT SIZES 1" THRU 1½" SWING JOINTS ARE REDUCED TO SIZE AT INLET FITTING. DO NOT USE TAPE OR SEALANT ON ACME THREADS. **SEE ACME SERVICE FITTINGS FOR ACME SERVICE FITTING OFFERINGS.**

00

LASCO SWING JOINT ACME INLET, MIPT OUTLET

N.T.S. SEE ACME SERVICE FITTING DETAILS FOR PART #.

DETAIL-FILE