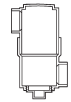




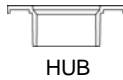
H x SJ  
w/Plastic Nut

PART NUMBER	SIZE (IN)	PIECES PER CARTON	CTN PER PALLET	List Price
<b>LA PATTERN P-TRAP</b>				
D711-015	1½	25	32	32.73
D711-212	1½ x 1¼	10	64	52.13



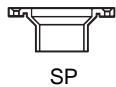
H x H

<b>DRUM TRAP</b>				
D720-015	3 x 6 x 1½	10	32	60.75



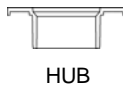
HUB

<b>CLOSET FLANGE (One Piece)</b>				
D800-040	4	25	24	21.77
D800-422	4 x 3	25	24	17.61



SP

<b>CLOSET FLANGE (One Piece)</b>				
D801-040	4	25	24	20.56
D801-422	4 x 3	25	24	21.53



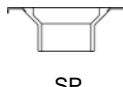
HUB

<b>CLOSET FLANGE w/KNOCK OUT (One Piece)</b>				
D810-422	4 x 3	25	20	20.49



ALL HUB

<b>CLOSET FLANGE, ADJUSTABLE w/METAL RING</b>				
D811-040	4	25	24	53.11
D811-422	4x3	25	24	46.95



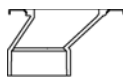
SP

<b>CLOSET FLANGE, ADJUSTABLE w/METAL RING</b>				
D812-040	4	25	20	54.74
D812-422	4x3	25	24	46.16



ALL HUB

<b>FLUSH CLOSET FLANGE w/KNOCK OUT</b>				
D815-422	4x3	25	24	32.78



ALL HUB

<b>OFFSET CLOSET FLANGE</b>				
D822-422 w/Plastic Ring	4x3	25	16	61.83
D823-422 Adjustable w/Metal Ring	4x3	25	16	60.92

# HVAC



PART NUMBER	SIZE (IN)	PIECES PER CARTON	List Price
<b>RUNNING TRAP</b>			
HRT-507	¾ (½)	25	1.75

Connection is both ½" slip x ¾" spigot



<b>P - TRAP</b>			
HPT-507	¾ (½)	25	1.75

Connection is both ½" socket x ¾" spigot



Slip x Nut  
x Slip

<b>CLEANOUT TEE</b>			
H403-005	½	50	2.05
H403-007	¾	50	3.18



FPT x Nut

<b>DRAIN PAN</b>			
H434-007	¾	25	4.55



Slip x Nut

<b>DRAIN PAN</b>			
H436-007	¾	50	1.51
H436-010	1	50	1.73